

CEDAR RIVER MIDDLE SCHOOL

PARENT SURVIVAL GUIDE

We know that there are many questions about middle school, so this list of questions and answers was compiled with the help of the teachers, students and parents. If you need further clarification on any of these issues, please feel free to contact us at 425-413-5400 or at www.tahomasd.us

ACTIVITIES/ATHLETICS/RECOGNITION

✓ **What are some of the recognition programs in place for students who are “doing the right thing” by turning work in on time and making good behavior choices?**

- We attempt to recognize and reward students in numerous ways including
 - Student of the Month: A boy and girl who exemplify that month’s district outcome is chosen from each team.
 - Team Celebrations: Students who turn their work in on time and do not receive any negative behavior marks against them for 4-5 weeks may participate in a celebration that involves games, fun and usually food!!!
 - Awards Night: At the end of year, we recognize students with high GPA’s and positive contributions to class.
 - Bear Bucks: Students who contribute positive acts for the school community or someone in the school will receive a “buck”, a small prize and have their name read on the announcements.

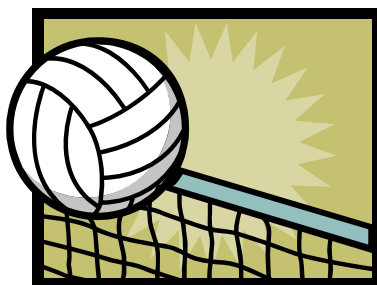


✓ **What type of after school activities are available?**

- Other than the homework centers listed later under academic supports, we have other activities in which students can participate: 6th grade intramural sports, math olympiad, yearbook, drama club, robotics and jazz band. More information on each of these programs will come out in the fall.

✓ **Does my student need a physical to participate in 6th grade sports?**

- Yes, all sports (grades 6 – 12) require a recent physical. Clearance forms are available in the main office.



ORGANIZATIONAL DETAILS

- ✓ **What is the start, drop off, and end time for school?**
 - School starts at 8:30. Students should be dropped off no earlier than 8:10 since there is not supervision for them until that time.
 - School ends at 3:00 p.m. After school homework centers and other non-athletic activities end at 4:00 p.m. Students are not permitted to stay on campus unless they are participating in a teacher-supervised activity.

- ✓ **When is student orientation?**
 - Student orientation for all incoming 6th grade students is usually during the last week of August. Please see the orientation flyer that will be sent home for more information.

- ✓ **How do I contact my student during the school day?**
 - Unless it is a medical or family emergency, we ask that parents and students coordinate their plans with each other in the morning before school. Unfortunately, with over 550 students at the school and limited office staff, we are unable to run messages to all the students.

- ✓ **How does my student manage all the assignments and expectations without having their own desk?**
 - The 6th grade year is really the first year of teaching long-term organizational skills. Students will need to use either a binder or an accordion style folder to organize their work into content sections. Obviously having parent support at night to open up the backpack and binder and to make sure everything is in its place is helpful. Also, every academic class uses the planner. This planner includes what homework needs to be completed that night.

- ✓ **Will my student have his/her own locker? How is it used?**
 - Students will have a locker available to them if they so desire. However, we have noticed over the past few years that most students use a backpack and many of the lockers sit empty during the year.
 - We use the first couple of weeks to organize our paperwork to get the lockers assigned (after we know who is really at school this year), and then we assign student's a locker. The student is then responsible for the contents of the locker and its security. We ask that students do not share their locker combination with anyone.
 - Students can keep unneeded books, cold lunches, and other school-related items in the locker. We ask that non-school related items stay at home. Minor decorations such as a small stick-up mirror, etc. are acceptable.

- ✓ **How can I get supply lists?**
 - A general supply list for each grade level is on the website. In August, more specific supply lists for each team will be available. These will be items that all students on that team need to have.

- ✓ **When will my student get their schedule so they know which team they are on and what electives they have? Can I change the class?**
 - In late August, schedules will be available for pick up at orientation.

- Because we balance both the teams and the electives very carefully during the summer, we are unable to take requests for changes. The only exception is into a program that can accept larger numbers such as band or choir.

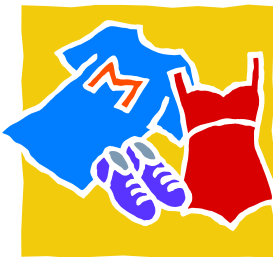
✓ **Is there recess or longer break in the day?**

- The only long break in the school day is at lunch time. Even then, we do not have the facilities and supervision to allow for students to run and play tag or football. We are always looking for parent volunteers who would be interested in helping supervise lunch activities. Let your PTA representative know if you are interested.
- There are a couple of reasons why longer breaks in the day are not provided more frequently. First, experience and research has taught us that most student discipline such as harassment and bullying takes place during non-structured time. By reducing that time, you reduce opportunities for bullying and harassment. Additionally, with Health & Fitness or an elective class for 75 minutes each day, students have an opportunity to be up and moving around for a substantial amount of time during the school day.

HEALTH & FITNESS

✓ **Why do the students wear uniforms for Health & Fitness and do they have to take showers afterwards? Also, what if I cannot afford the uniform?**

- At this age, it is not hygienic to wear the same clothes for school as well as Health & Fitness classes. Therefore, we standardize what students wear to make sure it is appropriate for working out. A uniform is purchased at the beginning of the year. In August, you will receive a fee sheet that reviews the fees that are due at the beginning of the year. As always at CRMS if there is a financial hardship coming up with money at the beginning of the year, or you cannot afford it in general, please contact the cashier, and we can work out a plan for payment or ask PTA for scholarship money to assist your family. The PTA uses the standard of qualifying for free or reduced lunch to consider scholarships.



- Showers are not required and most students opt not to shower after class. A change of clothes and deodorant seems to be sufficient.

✓ **Will the boys and girls be separated during Health & Fitness?**

- No, the Washington Administrative Code has interpreted federal Title IX law to say that Health & Fitness classes must be heterogeneously grouped by gender. Therefore, for most of the activities there will be boys and girls in the same class.



GRADES

✓ **How does the grading system work compared to 5th grade?**

- It is difficult to answer this question, because the grading systems across the elementary schools differ. However, we do give letter grades at 6th and 7th grade. Each assignment turned in is worth a certain number of points. Points are taken off if the assignment is not turned in on time or if answers are incorrect. Tests and comprehensive projects are usually worth more than daily assignments. The number of points that your student earns is divided by the number of points possible which creates a percentage. This percentage is translated in a traditional manner to a letter grade. While the system used in some 5th grade classes does not generally translate into grades, the following might be used as a guide: if your student was receiving “plus” and turning work on time, they were getting an A to high B, depending on the teacher. The “check plus” could be interpreted as a low B, with a simple “check” receiving a “C” (average work.) A minus in a content area suggests that the student was either at a “D” or “F” level.



✓ **What if I don't like a teacher's grading policy or system?**

- You are always welcome to share your opinion about a grading system, though the responsibility of teaching and assessment lies with the classroom teacher who determines a student's grade.

✓ **Why would absences impact my student's grade?**

- Many teachers in secondary school give a small number of participation points. These points reflect the benefit that a student gets and gives by being in class that day. Usually these points cannot be made up even for an excused absence. See your teachers' grading explanation to see if they give participation points. In addition, extended absences due to illness or vacation make it very difficult for students to get work caught up and make it difficult to stay current with the new learning that is taking place. We highly recommend scheduling your family's vacations for non-school times.

✓ **What type of communication can I expect from the student and the school?**

- Information is posted on the website which is updated frequently. Additionally, important information may be communicated by our School Messenger system. Having accurate phone numbers and e-mail addresses on file will allow you to receive these communications.
- In a perfect world, teachers would be able to call home to every parent at the end of each school day. However, with over 130 students, teachers are unable to do so. Fortunately, teachers have set up a number of systems to help keep the parent informed. 6th grade teachers and students can use the planner as a communication tool with parents. In addition, on-line grades and quarter progress reports are used to keep parents informed. Finally, a parent can always e-mail a teacher for an update and expect an answer within 48 hours.
- In the “1st day packets”, a parent handbook with important dates, review of discipline policies, and PTA information will be included.

✓ **What supports are in place for academics?**

- We offer 6th grade students a couple of options. First, there are homework centers after school every day Mon – Thurs. These have a certificated teacher who can assist students in their core academics. More information about the structure of the after school help will come out in September. Additionally, teachers will work one-on-one with students on an as-needed basis. Please contact your student’s teacher for that additional help.

✓ **How will I be notified about the rules and consequences of the school?**

- Your student will receive a planner at the beginning of the school year. The front section of this planner will have the attendance policy, discipline policy, helpful phone numbers, staff list, etc. Please make sure and ask to see your student’s planner after the second day of school. After the first week, continue to look at your student’s planner daily to look for homework and other reminders that your student has written down.

✓ **Can I visit my student’s classroom? Can I visit my student at lunch?**

- Because middle school students are self-conscious about being singled out, we usually don’t have parents visiting the classroom unless they have a specific volunteer responsibility that was arranged ahead of time. If you would like to see a particular class, please contact the teacher 24 hours in advance so we can make the arrangements. For doctor’s appointments, parents should come to the front office and have their student released from class. Parents should not go to the classroom to retrieve students. Parents or other community members visiting at lunch must be on the cleared volunteer list since they will inevitably have contact with other children without being directly supervised by a teacher. In addition, anyone visiting on campus needs to check in through the front office and receive a visitor badge.

✓ **How long is lunch? Are there long lines for the hot lunch?**

- Lunch is 30 minutes long with an additional 3 minutes to get to the next class at the end of lunch. Students are expected to sit down and eat in the cafeteria for the first 15 minutes. After their area is clear, the students are dismissed to walk around the cafeteria or go outside to the courtyard. All 7th grade students have lunch together and all 6th grade students have lunch together. There are enough seats in the cafeteria for all students at a lunch and no “saving” of seats is permitted.
- As accounts are being set up and paid for the first couple of weeks of school, the line is long and moves more slowly. There is still plenty of time for a student to eat their lunch during the lunch-time, but the line will go faster after the first couple weeks of school. Please note that lunches may be paid in advance on-line through the website.



✓ **Is breakfast served?**

- Yes, breakfast is available during the 15 minutes before school starts. Students on free or reduced lunch qualify for free/reduced breakfast. Otherwise, the pricing structure is available on the district website under the food service department or by calling district office at 425-413-3400.

TRANSPORTATION

- ✓ **How do I know which bus my student is on?**
 - The Voice of the Valley publishes the bus runs in the publication a week before school starts. In addition, you can call transportation at (425) 413-3220.
- ✓ **How does my student get a bus pass?**
 - For liability reasons, we require a note from the parent. The student drops the note off in the morning and picks up the pink bus pass in the afternoon prior to getting on the bus. Permanent bus passes are possible. Please contact the front office for permanent passes. Finally, there are no bus passes on early release days unless it is for a daycare reason.



DISCIPLINE

- ✓ **What is an infraction? Why would my student get one? Does it go on their “permanent” record?**
 - An infraction is a written record of a student not following the rules. Parents sign the white copy of the infraction. It states the student behavior, the staff member’s response, and the consequence for a student.
 - Infractions are issued for everything from gum chewing to fighting. If it is a low-level incident, a phone call may not take place, just the parent signature. If the incident involves a consequence such as a Friday School or higher (in school suspension, out of school suspension), there will always be an additional letter and phone call from an administrator.
 - Infractions go into a discipline file in the dean of student’s office and on the discipline file on the computer.
 -
- ✓ **What happens if a student who has always followed the rules now starts acting out, getting poor grades, and not listening to his/her parents?**
 - 6th and 7th grade is a time of transition not only for schools, but for families. Most students will re-test boundaries that the family established long ago to see if the boundaries are still there. Parents should anticipate some changes in behavior. If you ever have a question or concern about what has happened at school, please call so that you can hear both sides of a story.
 - We recommend to parents that they stay with their consistent form of parenting through middle school. The student may not make it easy on the parent, and the parent will hear “I am the only one with a 9:00 p.m. bedtime; who can’t see Rated R movies, and who has to check-in with my parent.” But, rest assured, yours won’t be the only student with those guidelines.

- If a student is acting out and getting poor grades, it is good to find out possible reasons from the teachers. Is there something happening socially at school? Is the work very hard for the student? Are some changes happening in the household? The counselor can help investigate changes in behavior and recommend different counseling avenues to parents.
- Finally, we highly recommend that parents know the first and last names of their child's friends and their phone numbers. If your student is going over to someone's house for the afternoon or evening, call and make sure there will be an adult present. Share with the adult your expectations for behavior and content on television, video games and websites.



Keys to Success at Middle School

- ★ Stay focused on school work. Balance outside activities with homework.
- ★ **ATTENDANCE, ATTENDANCE, ATTENDANCE**
- ★ Ask for help from a teacher or parent if help is needed in school work or in a social situation
- ★ Be involved in school activities
- ★ Find “study buddies” in your classes that you can call if you have questions about homework.
- ★ Use the planners!